

Nuclear Medicine Imaging (SPECT Scan)





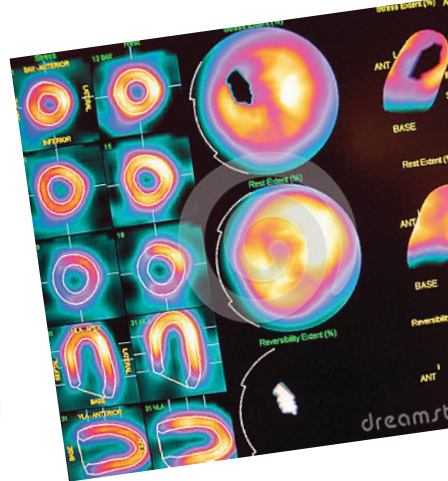
The Department of Radiology provides a comprehensive range of imaging services, both diagnostic and image-guided interventional procedures to diagnose and treat many medical conditions. Using advanced imaging equipment, our qualified and experienced radiologists and radiographers perform a variety of examinations, from basic X-rays to more complex MRI and CT scans.

What is Nuclear Medicine examination?

Nuclear Medicine is an advanced technique that makes use of a nuclear marker to label a diagnostic medicine drug. It is also known as a radioactive tracer.

Small amounts of radioactive tracers are administered to the body to diagnose and determine the severity of certain cancers, heart disease, gastrointestinal, endocrine, neurological disorders and other abnormalities.

A safe dose of tracer is injected or swallowed by the patient. Nuclear markers absorbed by the body emit harmless gamma-rays that are captured by a Gamma Camera. This offers doctors a detailed diagnosis of a body's specific diseases.



What can I expect?

- Radioactive tracers are administered before or during the scan.
- You will be told to sit or lie down, depending on the type of your scan.
- Please stay still during the scan.
- You may speak to a radiographer during the scan. He/ she will be in a control room near you.

How long is the examination?

- Examinations may last two hours or more. As the tests are conducted in a radiation environment, **please do not bring young children/babies** to the Nuclear Medicine area.

How should I prepare?

General preparation

Please inform the radiographer or nurse if you have any of the following:

- Allergy to iodine
- Barium Study Examination
- Fever, asthma or other infections
- History of drug allergies
- Pregnant or breast-feeding
- Radioactive therapy done in the past



The following scans do not require special preparations:

- ☐ Bone Scan
- ☐ DMSA Kidney Scan
- ☐ Liver/ Spleen Scan
- ☐ Lungs Scan
- ☐ Parathyroid Scan
- ☐ Thyroid Scan

☐ **MAG 3 kidney Scan**

- Drink one litre of water an hour before the scan.

☐ **Meckel's Scan**

- Fast two hours before the scan.
- Refrain from a Barium Contrast Study two weeks before the scan.
- Cimetidine or Ranitidine will be administered/ prescribed by a Ward or Clinic one hour before the scan.

☐ **Heart (stress and rest) Scan, MUGA**

- Do not consume coffee, tea, Milo, energy or any caffeinated drinks 12 hours before the test.
- Wear something comfortable, e.g. walking shoes and exercise pants. Bring warm clothing as the waiting area can be cold.
- Fast for four to six hours before the procedure (except for Viability, MUGA and Rest Scan).
- You may eat and drink after your stress test.
- Please inform/ check with your doctor if you are:
 - Pregnant
 - Asthmatic (bring your inhaler)
 - Required to bring your regular or morning medications
- Stop beta-blockers & Nitrate 48 hours (two days) before the test.
From: _____ To: _____ (Unless advised by doctor)

Example:

- Atenolol
- Bisoprolol
- Metoprolol or
- Nebivolol

☐ **Gastro-intestinal Scan**

- Do not eat or drink six to eight hours before the scan.

After the examination

- Avoid close contact with pregnant women to limit radiation exposure to them. Do this for at least 12 hours after your scan.
- You may return to a normal diet.
- Drink more water to flush out the radioactive tracer in your body.
- You may return to normal activities.
- Go to the nearest Emergency Department if any abnormality develops.



Important points to note

- Please inform us if you are/ may be pregnant. You will be asked for your name and surgery type by different staff in the hospital to confirm you go for the right examination.
- Please be punctual. Any delay could affect the next patient and the image quality of your scan.
- Patients below 21 years old or mentally unsound must obtain consent from their parents or guardian.
- Patients are required to pay a deposit to secure the radioisotopes required for the scan.
- Please inform us at least two working days before your examination if you need to reschedule. Patients who miss the scan without informing us will have their deposit forfeited.
- Please contact the Radiology department at 6716 2001 (Monday - Friday 8.00am - 5.30pm) if you cannot keep the appointment.
- Please bring all earlier X-rays and reports with you.

Appointment

Name:

Age / Sex:

Deposit:

Fee (estimated):

Appointment Date/ Time:

Tracer Injection Time:

Scan Time:

Venue: Nuclear Medicine, Radiology Department, Tower A - NTFGH Clinics
Ng Teng Fong General Hospital

Acknowledged by:

For more information

Ng Teng Fong General Hospital and Jurong Community Hospital

1 Jurong East St 21, Singapore 609606

www.ntfgh.com.sg | www.jch.com.sg

Clinic opening hours

Monday – Friday: 8.30am – 5.30pm

Saturday: 8.30am – 12.30pm (Selected clinics only*)

Dental Clinic: Monday – Thursday: 8.00am – 5.30pm, Friday: 8.00am – 5.00pm

**Please refer to our websites for more details.*

General enquiries & appointments

General enquiries line: 6908 2222 (24-hr)

Fax: 6716 5500 | Email: contactus@nuhs.edu.sg

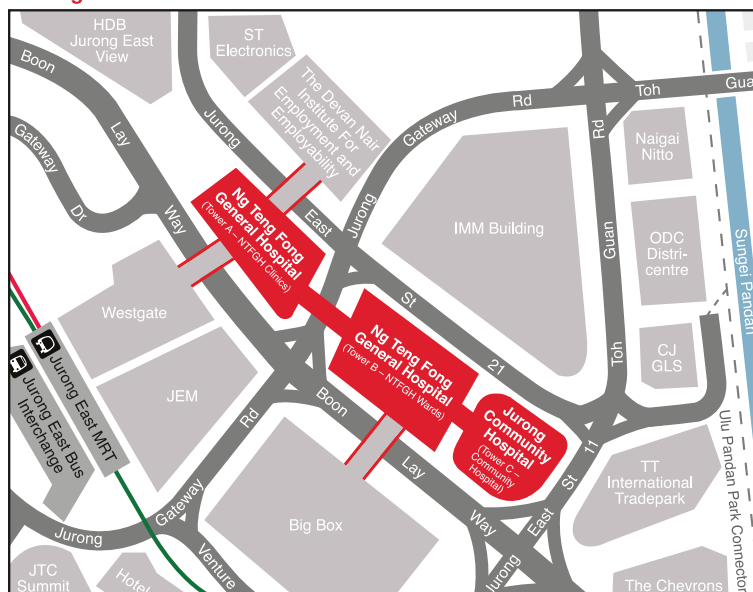
Appointment line: 6908 2222 (Monday – Friday: 8.00am – 5.30pm, Saturday: 8.00am – 12.30pm)

Fax: 6716 2200 | Email: appointment@nuhs.edu.sg

Dental appointment line: 6716 2233 (Monday – Friday: 8.00am – 5.30pm)

Fax: 6716 2200 | Email: JHCampus_Dental@nuhs.edu.sg

Getting there



By train

Alight at Jurong East MRT Station

By bus

Jurong East Bus Interchange

41, 49, 51, 52, 66, 66B, 78, 78A, 79, 79A, 97, 97E, 98, 98M, 105, 143, 143M, 160, 160A, 160M, 183, 183B, 197, 333, 334, 335, 506

Along Boon Lay Way

49, 99, 333, Private bus service 625, 990

Disclaimer:

The information in this brochure is meant for educational purposes and should not be used as a substitute for medical diagnosis or treatment. Please seek your doctor's advice before starting any treatment or if you have any questions related to your health, physical fitness or medical condition. Information is accurate at the time of printing.