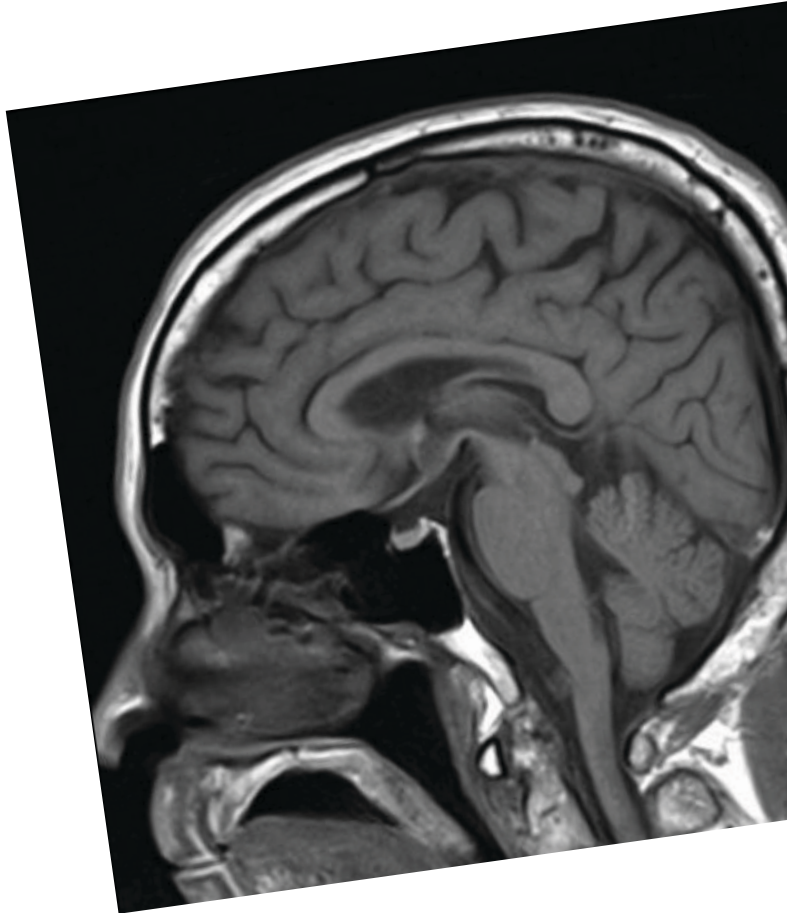


Magnetic Resonance Imaging (MRI)



The Department of Radiology provides a comprehensive range of imaging services, both diagnostic and image-guided interventional procedures to diagnose and treat many medical conditions. Using advanced imaging equipment, our qualified and experienced radiologists and radiographers perform a variety of examinations, from basic X-rays to more complex MRI and CT scans.

What is an MRI examination?

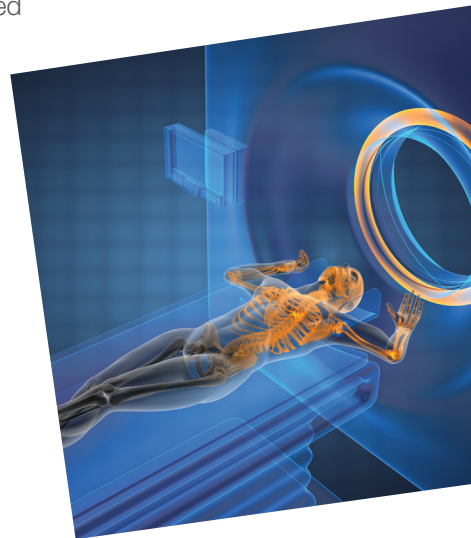
Magnetic resonance imaging (MRI) is a technique used to visualise the structures in your body with exceptional detail. The MRI equipment can produce two or three dimensional images of your body parts being examined.

An MRI examination does not involve radiation and images are formed using a large magnet, radio frequency waves and a computer to gather the information generated.

MRI can visualise certain structures in your body better than X-rays and provide important information to your doctor.

What can I expect?

- The examination room contains a large magnet with a padded couch.
- You will be required to lie flat on the examination couch and, depending on the part of your body to be scanned, move either your feet or head into the machine first.
- Occasionally, some patients experience claustrophobia during the scan. If you have a history of discomfort in a confined space (claustrophobia), please inform your referring doctor before making an MRI appointment. You should also inform our staff before the examination.
- You will hear whirring and thumping sounds throughout the scan. Please do not be alarmed as such sounds are common to all MRI equipment. Ear plugs will be provided to muffle these sounds.



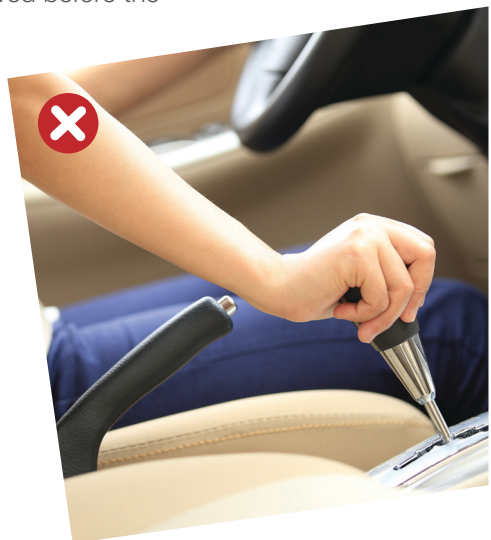
- You will be given a call bell to alert the radiographer if you need any assistance during the scan.
- You may also hear and speak to the radiographer throughout as he/she observes you from a control room.

How long is the examination?

- It will usually take between 30 minutes to an hour to complete the examination (depending on the region being scanned).

How should I prepare?

- No special preparation is required for an MRI examination, unless there is a need for sedation.
- If sedation is scheduled, you will be informed about the appropriate restrictions.
- A hospital gown will be provided for you to change into when you come for your MRI scan, regardless of which region of your body is being scanned.
- All jewellery and accessories must be removed before the scan. You are advised to leave all valuable accessories at home.
- Do not apply any substances (e.g. hair spray, mousse, etc) to your hair if your appointment is for MRI of the head and orbits. No make-up should be used as these may alter your MRI images.
- If you are scheduled for an arthrogram with an MRI examination, you are advised **NOT** to drive after your examination. You are advised to make alternative transport arrangements on the day of your examination.



Will there be any injections?

- Some patients may require an injection of a special dye (contrast) into their blood stream to better visualise certain areas.
- You will be informed if such an injection is needed on the day of your examination.
- If an injection is needed, you will be asked some questions on your medical history to minimise any possibility of developing an allergic reaction or complications from the contrast.
- If you have any doubts, please discuss them with your doctor or our radiographer.

Please inform our staff if you have any of the following:

- Hearing aids/cochlear implants, neurostimulators, permanent eyeliner tattoos
- Kidney problems
- Metallic implants, e.g. clips used in brain or vascular surgery, electronic implants, metal mesh, wire sutures, metallic stents, intrauterine contraceptive device
- Pacemaker, artificial heart valves/vascular stents/filters
- Possible or confirmed pregnancy
- Prosthetic devices
- Shrapnel, metallic foreign body or charm needles which may be lodged in your body/possibility of metal fragments in eyes/exposure to metal fragments at work
- Vascular access port/catheter

Important points to note

- Please inform the radiographer if you suspect that you may be pregnant.
- Please be punctual. Any delay will affect the scheduling of other patients, and your appointment may need to be rescheduled.
- Please inform the Radiology department at 6716 2001 if you are unable to keep the appointment.
- Patients below 21 years old or are mentally unsound must obtain consent from their parents or guardian.
- Please bring along all your previous X-ray reports and images, if any.

Appointment

Name:

Age:

Sex:

Examination:

Fee (estimated):

Appointment Date:

Appointment Time:

Referring SOC:

Venue: Radiology department (Tower A – NTFGH Clinics),
Ng Teng Fong General Hospital

Notes:

For more information

Ng Teng Fong General Hospital and Jurong Community Hospital

1 Jurong East St 21, Singapore 609606

www.ntfgh.com.sg | www.jch.com.sg

Clinic opening hours

Monday – Friday: 8.30am – 5.30pm

Saturday: 8.30am – 12.30pm (Selected clinics only*)

Dental Clinic: Monday – Thursday: 8.00am – 5.30pm, Friday: 8.00am – 5.00pm

*Please refer to our websites for more details.

General enquiries & appointments

General enquiries line: 6908 2222 (24-hr)

Fax: 6716 5500 | Email: contactus@nuhs.edu.sg

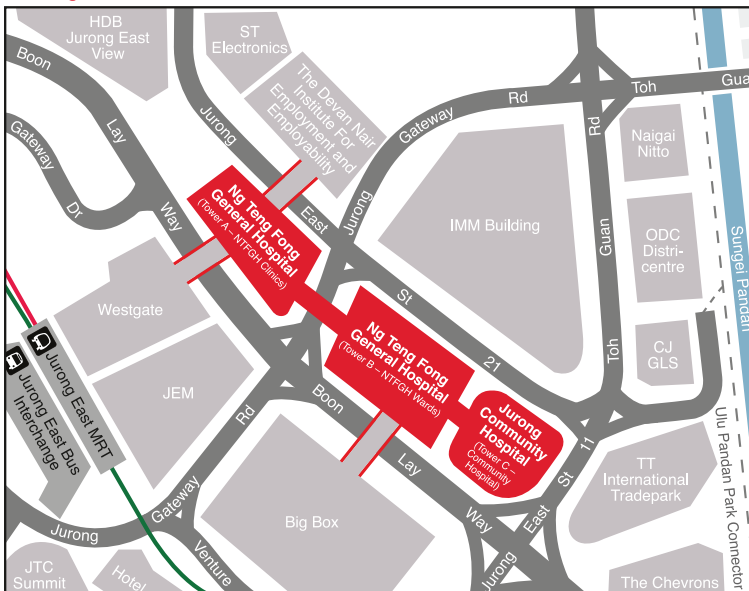
Appointment line: 6908 2222 (Monday – Friday: 8.00am – 5.30pm, Saturday: 8.00am – 12.30pm)

Fax: 6716 2200 | Email: appointment@nuhs.edu.sg

Dental appointment line: 6716 2233 (Monday – Friday: 8.00am – 5.30pm)

Fax: 6716 2200 | Email: JHCampus_Dental@nuhs.edu.sg

Getting there



By train

Alight at Jurong East MRT Station

By bus

Jurong East Bus Interchange

41, 49, 51, 52, 66, 66B, 78, 78A, 79, 79A, 97, 97E, 98, 98M, 105, 143, 143M, 160, 160A, 160M, 183, 183B, 197, 333, 334, 335, 506

Along Boon Lay Way

49, 99, 333, Private bus service 625, 990

Disclaimer:

The information in this brochure is meant for educational purposes and should not be used as a substitute for medical diagnosis or treatment. Please seek your doctor's advice before starting any treatment or if you have any questions related to your health, physical fitness or medical condition. Information is accurate at the time of printing.